

'Camille' Is To Be Televised Sunday Night

Judith Evelyn, American-born Canadian actress who has been voted by critics as one of the most talented stage artists of this decade, will play the title role in Alexandre Dumas' "Camille" on the Television Playhouse over Station KRSC-TV next Sunday, from 9 to 10 p. m. Miss Evelyn will be assisted by



JUDITH EVELYN

A brilliant cast, several members of which have appeared with her on Broadway. Though still in her early 30's, Miss Evelyn has had an exciting life, which includes such varied experiences as starring in "Angel Street," the longest-running melodrama in the history of Broadway (three years), and being spilled into the middle of the Atlantic Ocean from one of the lifeboats of the ill-fated Athenia in the early days of the war. Assisting Miss Evelyn in "Camille," Helen Ray will portray Nanine; Rex O'Malley, who played the part of Gaston opposite Greta Garbo in the movie version, will again be Gaston; Miss Timothy Kearse, of "Life With Father" fame, will enact the role of saucy Olympe; Ed Jerome, veteran of stage, screen and radio, will portray Monsieur Duval, the aristocratic father of Armand, Camille's handsome lover; and John Alberts will play Armand. Dumas based his story on "Camille" on the actual life of Alphonse du Plessis, "a girl with Dresden china figure and long enameled eyes," who created the impression that she wore scentless camellias because she could not endure the odor of flowers.

Temper Not Cooled

WICHITA, Kan.—(UP)—Temperatures are more likely to give way to fits of anger in hot weather, the records show, but on Wichita's first really chill day of fall someone smashed a parking meter with a heavy hammer and someone else dumped garbage on Mrs. Kenneth Hodges' new car.

YOUR BABY AND MINE

By MYRTLE MEYER ELDRED

Helpful Hints for Night Feeding
For the first two or three months after the baby is born there probably will be at least one night feeding. This may come at 10 o'clock, with the baby sleeping until morning, or it may come around midnight.

It is unwise to make any attempt to establish an hour for night feedings that may be convenient to the parent. A wide-awake hungry baby will nurse or take the bottle satisfactorily; an awakened baby will sleep through the feeding and be wide-eyed an hour or so later and ravenous for food.

The nursing baby is the easiest to feed at night. The mother should sit up while she nurses the baby to prevent falling asleep with the baby beside her. But she can be comfortable and warm and the father can assume the chore of putting the baby back into his bassinets.

The warming of the bottle need not be too complicated if preparations are made for it. An electric bottle warmer is convenient and a tablespoon of water will suffice to bring the bottle to a tepid heat in a few minutes.

Easy Method

A small electric plate on which is set a deep, small utensil can be used to heat the bottle. To hurry the preparations have very hot water in a thermos bottle, pour this into the utensil, turn on the heat, set the bottle sideways (flat on the bottom might cause it to crack) and wait the five or so minutes demanded to heat it.

But beware! Do not heat the bottle beforehand and feed that to the baby when he awakens. Despite the consistent warning not a year goes by but parents

develop this "bright" idea and think they have solved the middle-of-the-night feeding problem.

Dangerous Practice

All milk contains some bacteria. The moment the milk is warmed these bacteria begin to grow and propagate and several hours later, when the milk is given to the baby, it may not be fit to drink. Remember we put milk in a warm place to sour and the souring is done by the growth of bacteria. What difference does it make whether this warm place is inside or outside of a container?

As soon as the baby is fully satisfied with his daytime rations he will stop waking for his night feeding. Usually, this will happen at about the second or third month. It will be a restful night, then, for the whole family.

Our new leaflet No. 5, "Baby's First Six Weeks," may be had by sending a stamped, self-addressed envelope with your request to Myrtle Meyer Eldred in care of The Register and Tribune Syndicate, Des Moines 4, Iowa.

Sally Lyman Elected

By Camp Fire Group

Sally Lyman, Garfield High School pupil, has been elected president of the Camp Fire Girls' honorary Torchbearer's Club, it was announced today.

Other new officers are Joan Packard, West Seattle High School, vice president, and Sally MacDonald, Roosevelt High School, secretary-treasurer. Girls who have attained Torchbearer rank, highest in Camp Fire, are eligible for membership. The club's next meeting will be December 29.

SEE . . . AND HEAR . . . THIS NEW



Magic Mirror Television Console with automatic image lock-in to give the clearest picture of them all! 10" direct view tube. Walnut console, 34" high, 18" wide, 16 1/4" deep.

A superb television console at a table model price!

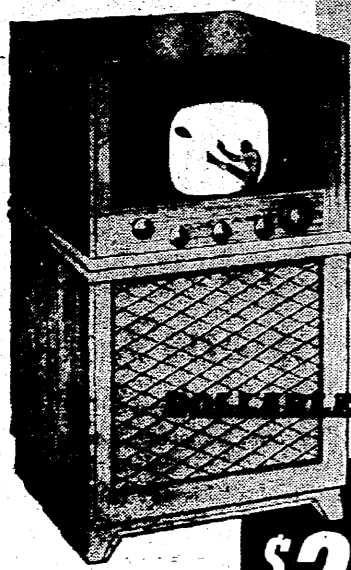
\$339.95 plus installation

Use our budget plan.

HOOPER ELECTRIC APPLIANCE

1012 3rd Ave. EL. 7012

Lowest Priced Console Television with FM



NOW... see this ALL NEW Packard-Bell TELEVISION TRIUMPH!

"TeleCaster"

only \$399.50 ORDER TODAY

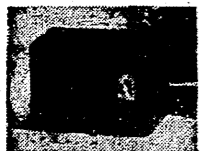
Don't Move Your Guests and Furniture—Roll in the "TeleCaster" . . . an Exclusive Packard-Bell Feature!

Concealed casters—that's the secret. . . Once again Packard-Bell leads the way. The makers of the West's largest selling radios now bring you television as you want it—television that is actually ahead of its time!—in a beautiful, rollable console—with FM RADIO at a price that says "Why wait?"

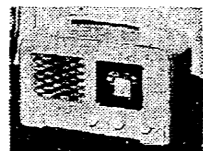
Packard-Bell RADIOS · PHONOGRAPHS · PHOTOGENIC TELEVISION

COMPARE These Sensational Features

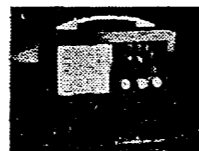
- MANY EXCLUSIVE
 - ✓ Photogenic Picture—Perfect! 19" Video Tube; \$2.50. In. image, clear and bright, day or night!
 - ✓ Most Flexible Unit Yet Devised Has even speaker and audio system, or plug into and plays through mighty Phonodisc audio system and larger speaker. 75-foot extension cord available.
 - ✓ Simplified Controls Brightness, Contrast and Tuning You can switch stations without waiting.
 - ✓ Moves on Concealed Casters at finger touch.
 - ✓ Full FM Broadcast Band. All channels.



MODEL 100 Cramped with value at this low price. FM heavy duty speaker, built-in loop antenna, superheterodyne circuit, automatic volume control, AC-DC. \$14.95 in Brown Plastic.



MODEL 682 Fine hardwood cabinet, metal grille and exclusive edge-lighted, station-dial. Outstanding tone, power, and selectivity. Outstanding value, with Tone Control. Walnut, \$34.95 Natural, \$36.95



MODEL 471-A PORTABLE AC-DC and Battery. Plays anywhere, anytime—with or without current. Selenium rectifier, FM speaker, HI-Q antenna. Smart luggage-type case. \$32.95 (low batteries)

Wholesale Distributor

E. K. ROGERS CO.

2225 5TH AVE.

SEATTLE

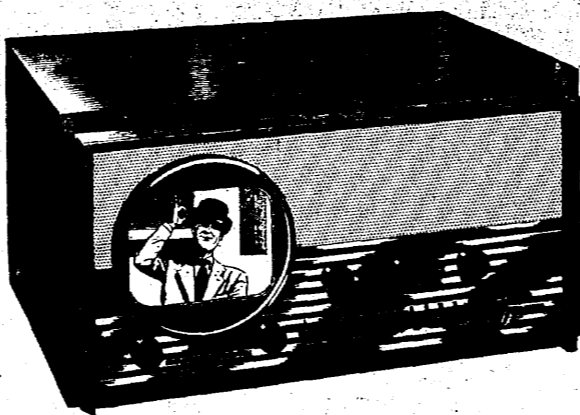


clear! sharp! bright!

by

hallicrafters

World Famous Manufacturers of Precision Radio and Television

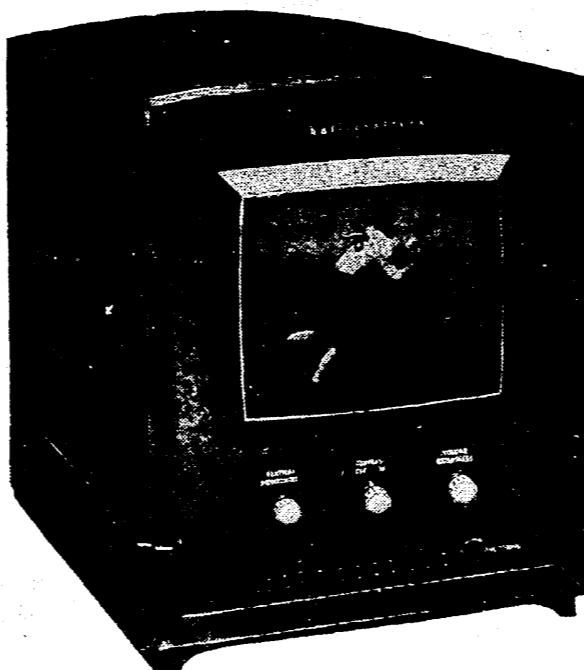


You'll delight in the new-found enjoyment which is yours with model 505. Its mahogany veneer cabinet is designed to harmonize equally well with contemporary or period furnishings. AND it's sensibly priced . . . \$202.50 plus installation

FOR THOSE WHO APPRECIATE THE FINEST—Hallicrafters

CARNEGIE HALL

News and entertainment, vividly pictured, more thrillingly presented than ever before. Large sixteen by twelve inch screen makes viewing easy in any light . . . in any size room. Pictures \$699.00 are clear, sharply focused, without distortion. Plus installation.



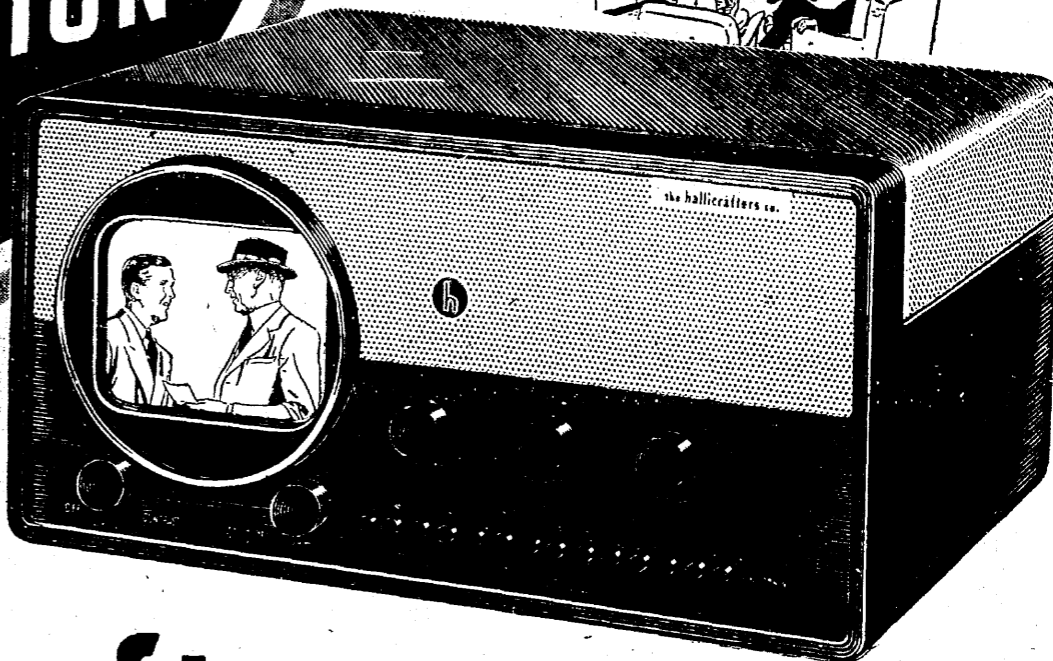
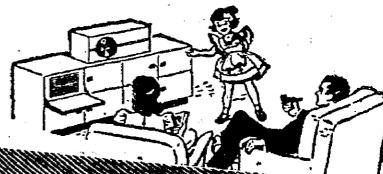
See AT

SEATTLE RADIO SUPPLY, Inc.

2117 SECOND AVE.

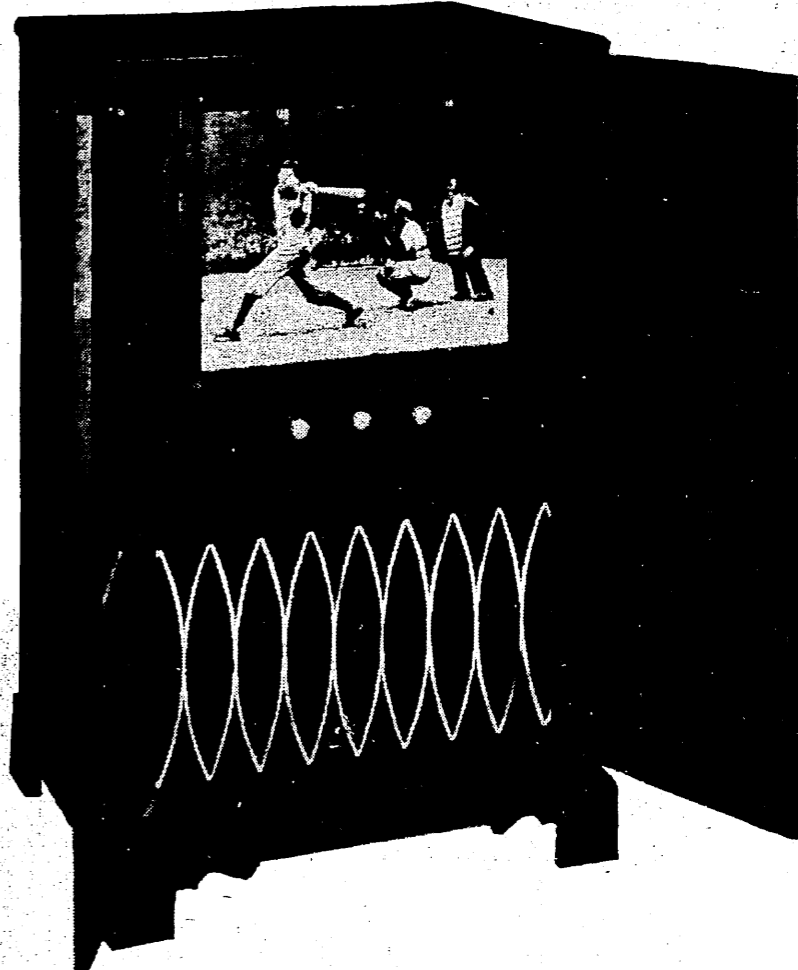
PHONE SE. 2345

AT SEATTLE RADIO SUPPLY, INC.



Here's Television at a price everyone can afford! Hallicrafters T-54. Beautifully housed in a silver-grey steel cabinet. \$192.50 plus installation

How natural that Hallicrafters, long-famed in the field of high-frequency communications equipment, should so quickly attain the role of a quality leader in the television field. Hallicrafters' highly-skilled precision engineers bring you the superb result of their specialized experience. The exceptional clarity of picture, rich fidelity of tone, and distinguished styling are all evidence of careful craftsmanship.



Compare These Hallicrafter Features . . .

- ★ Hallicrafters television is easy on the eyes. Clear pictures in any light.
- ★ Seven-inch picture tube; 23-square-inch screen, 18 tubes, plus picture tube, plus 4 rectifiers.
- ★ Easy to operate. Adjust contrast and brightness controls for best viewing under varying lighting conditions. Audio volume control.
- ★ Hallicrafters exclusive push-button tuning gives quickest possible program selection. Just push a button and you have your favorite station.
- ★ Dependable performance. Twelve channels, covering all possible frequencies, already built in. Eliminates future service calls.

You'll find complete television enjoyment with this handsome Hallicrafters in the Carnegie Hall series. The 10-inch screen produces a large picture for truly comfortable viewing. Objects are clear and natural with photographic reality. \$303.50 plus installation

OPEN SATURDAYS TILL 2:00 P. M.