

When Loggers Swing 'Em Hot, They Ain't Dancing, Brother!



(After his experience as a Montana logger, Byron Fish, Times correspondent, is comparing Western Washington methods of getting out timber—a much more complicated process.)

By BYRON FISH

Whenever logs are stacked in a pile, passively awaiting their next move, they are known as a "cold deck." Conversely, when they are being moved along from one spar tree to another as fast as they are skidded in, the loggers say they are "swinging them hot."

A version of hot swinging was going on at the high-lead side where Alvin (Pop) Hulbert is the foreman.

When the rigging crew on the hillside sent in a log to the spar tree, it was unhooked by the "chaser," J. L. Bearnose. As the main line, with its chokers, was being reeled out for another load, the "cat" hooker, Max Durward, and his chokerman, Parker Kennedy, took over.

Durward and Kennedy set the choker on the fresh log, and Gene Hulbert, who drove the tractor, dragged it from the spar tree with the cat's winch. The winch also hoisted the front end of the log off the ground, so it hung suspended in a steel arch mounted on caterpillar treads.

Like the high lead itself, the cat took one to three logs, depending on their size, oozing them down through the mud 150 yards to the loading tree.

The loading tree was rigged with a swinging "heel boom," operated by H. E. Wenz, loading engineer. As the cat driver cast off the logs at the landing, Herb Brehmeyer, Jr., head loader, and James Smith, second loader, fastened the boom hook to them.

The 18-wheel trucks, in a semi-amphibious movement, turned in the mud sea and backed under the boom to receive the logs.

A second cat, without benefit of spar tree or rigging crew, also was skidding in logs. It was picking up the trees fallen by selective cutting outside the circle of the high lead's reach.

Occasionally a log, usually a windfall or a tree which had been knocked down by mistake and was being salvaged, arrived too long for the trucks. Tate Van Norman was bucking these up at the landing.

W. Stremel, leading "chaser," was unhooking from the cats, branding the logs for the time when they were dumped in salt water, and marking government timber with big smears of yellow paint so it could be tallied by the scalers.

I decided that getting the logs viewpoint could be carried too far, so instead of riding out in the downpour with them, I climbed in the truck cab with Ray Roth, the driver.

Roth was skipping a Kenworth Diesel, and he and one other driver were holding the loading tree even. With less than a four-mile haul to the railroad siding, they were making about 10 trips apiece each day.

Yule Kettles Of Salvation Army Ready

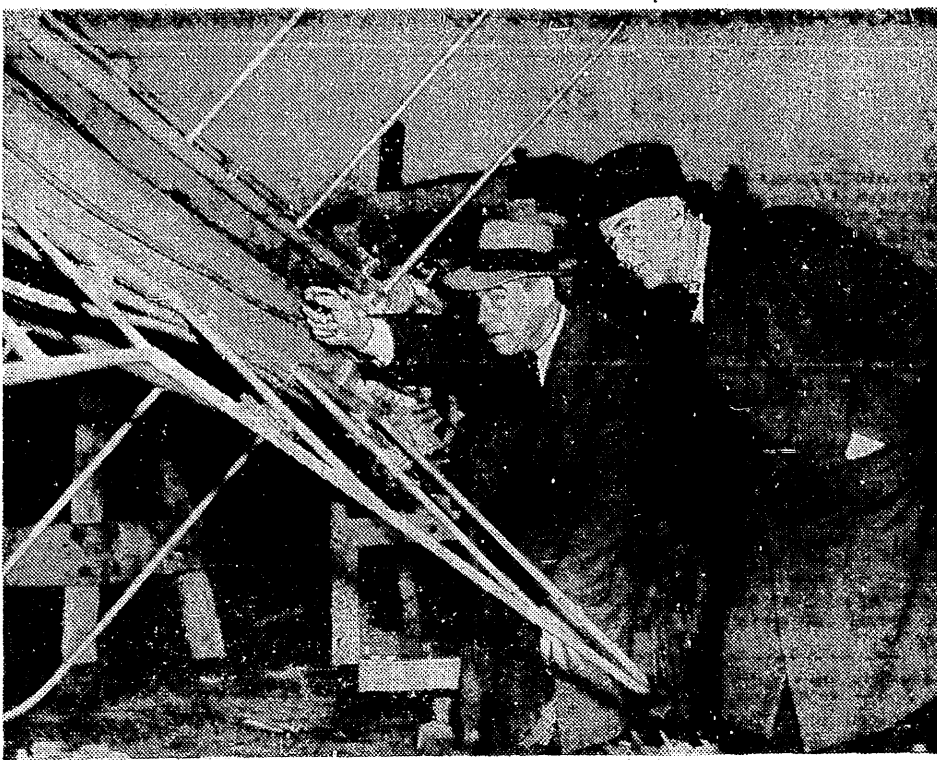
Salvation Army Christmas Fund kettles will appear in the downtown area Saturday. Brig. George W. Johnstone, divisional commander here, announced today.

The kettle project has been approved by the Community Chest and the Public Appeals Board, Seattle agency for screening fund appeals, Johnstone said.

The kettle fund goes toward purchase of Christmas food and clothing for unfortunate families. In addition, jail prisoners, hospital patients, homeless men and the Salvation Army's "Skidroad" mission receive gift packets from the fund.

Persons wishing to donate personally selected gifts may deposit them in care of co-operating retail stores under a Salvation Army program titled Christmas Tree Caravan," Johnstone said. Details of the program will be announced later.

A new municipality named Alcalde Diaz, in honor of the outgoing mayor of Panama City, has been founded to provide a civic community for dislocated small farmers in that part of Panama.



FINAL CHECK-UP—Robert E. Priebe (left), general manager of Station KRSC-TV, and P. K. Leberman, its president, made a final inspection of the station's antenna before it was hoisted to the top of the tower on Queen Anne Hill.

Mrs. Reva Beck Bosone, police court judge in Salt Lake City, is the first woman elevated to the House of Representatives in Washington from Utah. She won on the Democratic ticket.

Lignin, a waste product of the coal tar and petroleum wood pulp industry, is a raw material that some day may rival chemicals.

MAGNOLIA HARDWARE Brings You

Admiral

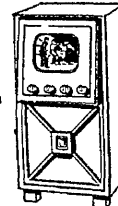
with the clearest picture of them all!

MAGIC MIRROR TELEVISION

A superb television console at a table model price!

Magic Mirror Television Console with automatic image lock-in to give the clearest picture of them all! 16" direct view tube. Walnut console, 34" high, 18" wide, 16 1/2" deep.

\$339⁹⁵



Complete home entertainment in matching sectional units.



CONVENIENT TERMS ARRANGED

Magnolia Hardware 3214 West McGraw WA. 1916

(Next: You can't log without dynamite and power shovels.)

By HIS MARK

Data Sought On Salvage Logging

A clearing house to collect and disseminate information on second-growth and salvage logging will be organized by the Washington Institute of Forest Products, pending legislative approval of Forest Products Commission recommendations.

W. B. Greeley, vice chairman of the commission, said today several experiments in second-growth and salvage logging now are under way, but no machinery has been established to correlate and analyze data from the experiments.

The Legislature will be asked to appropriate \$15,000 from the state's general fund for establishment of such a service, Greeley said. In addition, \$5,000 will be solicited from private sources for the work, bringing the total expenditure for the project to \$20,000, Greeley said.

San Diego Base Grows

SAN DIEGO (UP)—San Diego's Naval Training Center is now the biggest naval establishment of its kind in the United States, according to John Nicholas Brown, assistant secretary of the Navy. Brown said the training center has a personnel of more than 24,000 "on board." He stressed this area's importance in the national preparedness program.

EMIL STARMOUNT Invites You To Come In See and Hear Thanksgiving Game Via Television.

Open Thursday During the BIG Football Game!

NEW PHILCO Television GIVES YOU ALL 3

PHILCO 1040 \$359.50 Plus Federal Tax. Installation and Service Warranty Extra.

1/5 DOWN TAKE 65 WEEKS TO PAY!!

In the University District

Starmount Radio 120 E. 45th St. Free Parking in Rear. COR. 2nd AVE. N.E. ME 3434

- ★ Starmount is a pioneer Dealer in Television.
- ★ Starmount is Proud of Its Television Service Organization.
- ★ Starmount Uses Only the Finest and Best Television Equipment.
- ★ Starmount, a Television Specialist, Recommends Philco.
- ★ Starmount is as close to you as your phone. ME 3434 For a Demonstration.

SEE the FIRST TELECAST from MEMORIAL STADIUM TOMORROW at SHERMAN CLAY'S TELEVISION DEPARTMENT WHICH WILL BE OPEN from 1:45 P. M. UNTIL 4:30 P. M. to ALLOW YOU TO VIEW THIS EVENT!

Open Mondays, Until 9 p. m. before Christmas

Sherman, Clay's new Television Service Truck... one of the first in Seattle

Ready to serve you is Sherman, Clay's new television truck, one of the first fully equipped television trucks in the Seattle area. With the truck's permanent 20-foot antenna, we can check the quality of television reception in your location. With all the latest tools and equipment at hand, our trained television service staff will install and service your new television receiver properly.

Sherman, Clay TELEVISION HEADQUARTERS For the Seattle Area

Choose from all these famed television names: MAGNAVOX • CAPEHART PHILCO • RCA VICTOR GENERAL ELECTRIC ADMIRAL • HOFFMAN

5:15 to 6:00 P. M. and from 7:00 to about 10:30 P. M.

Sherman, Clay is all set with a fine selection of the top television makes and the dependable installation service necessary to transform your home into a world-wide stage. You'll see and hear exciting sports and news events, plays, children's programs... and enjoy their thrills and action from a front row, reserved seat... your favorite comfortable chair.

Thanksgiving is "T Day" in Seattle... with KRSC-TV on the air, telecasting the High School Championship Football Game from the Seattle Memorial Stadium. Regular telecasts are scheduled every day (except Monday and Tuesday) from

See all the fine makes here

Sherman, Clay offers you side-by-side comparison of the finest of the leading television names... at prices that begin at only \$199.50 for an excellent table model. All are the best instruments on the market we believe... and will prove to be first class investments for you in the new and exciting home entertainment. We strongly advise you to do your Christmas television shopping early, however. Come in... see and hear all of the new sets this week. Convenient budget terms, may be arranged, of course.

Sherman Clay 1624 FOURTH AVENUE • MAIN 7580